

ATTENTION: RECHARGEABLE BATTERY, FOR 24 HOURS CONTINUOUS WORKING

DATA OUTPUT

SMART HIGH PRECISION DIGITAL INDICATORS

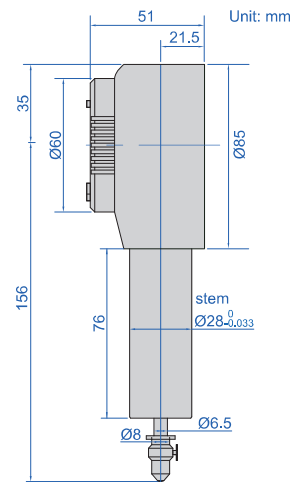
THE MEASURING TIME PERIOD CAN BE SET (1-99S IS ADJUSTABLE), THE MAX./MIN./TIR/AVG. CAN BE MEASURED AUTOMATICALLY DURING THIS PERIOD, AND THE DATA CAN BE TRANSMITTED AUTOMATICALLY AFTER MEASUREMENT

PRESS BUTTON OR PROBE MOVEMENT CAN START AUTOMATIC MEASUREMENT, THE MEASUREMENT CAN BE DELAYED (1-99S IS ADJUSTABLE)

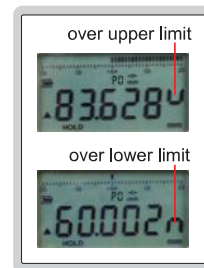
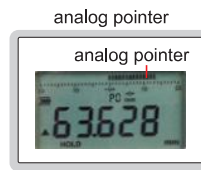
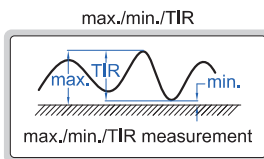
- Linear ball bearings for ten million times use
- Ø28mm stem suitable for reinforced clamping
- Absolute encoder, the original data remains after power off
- Adjustable resolution: 0.0001mm/0.00001"
0.001mm/0.00005"
0.01mm/0.0005"
- Reading in digital and analog
- The measuring time period can be set (1-99s is adjustable), the max./min./tir/avg. can be measured automatically during this period, and the data can be transmitted automatically after measurement
- Press button or probe movement can start automatic measurement, the measurement can be delayed (1-99s is adjustable)
- Button function: on/off, adjust resolution, data hold, data output, max./min./TIR/avg., data preset, tolerance, mm/inch, automatic power off, measuring direction change, delay setting, measuring time setting
- Power: rechargeable Li-battery, for 24 hours continuous working
- Ceramic probe



2150-5A



alarm when over tolerance



With data interface

Optional accessory:

wireless transmitter, code **7315-60**

data output cable (keyboard format), code **7302-60**

data output cable (serial port format), code **7305-G60**(cable length 3m, maximum length 15m is optional; **RS232** protocol)

RS485 protocol high precision digital indicator and data output cable can be customized

Code	Range	Accuracy	Hysteresis	Maximum measuring force	Remark
2150-5A	0-5mm/0-0.2"	0.5µm	0.3µm	1.5N	probe movement starts measurement
2150-5B	0-5mm/0-0.2"	0.5µm	0.3µm	1.5N	press button starts measurement

Built-in wireless

Optional accessory:

wireless receiver, code **7315-2/3/6/7/8/9**, transmission distance is 10 meters (under the condition of no obstruction and no electromagnetic interference)

Code	Range	Accuracy	Hysteresis	Maximum measuring force	Remark
2150-5AWL*	0-5mm/0-0.2"	0.5µm	0.3µm	1.5N	probe movement starts measurement
2150-5BWL*	0-5mm/0-0.2"	0.5µm	0.3µm	1.5N	press button starts measurement

* Continuous data collection can be customized (press "DATA" button to start continuous collection, press again to stop; collection frequency can be customized, the fastest data collection is 10 pcs per second)